

Gain 70dB, Output 20dBm

Overview:

440468 wireless Pico Repeater is a fast and cost-effective solution widely deployed to provide coverage improvement for in-building solution, especially for areas without optical access and emergency coverage, e.g. house, apartment or office area 500-1800sq.m.

440468 wireless Pico Repeater receives and amplifies signal from donor BTS. It is a bi-directional amplifier transmitting signal to coverage area, bringing coverage to the shadow or blind area in rural and urban buildings where the BTS footprints can't reach.

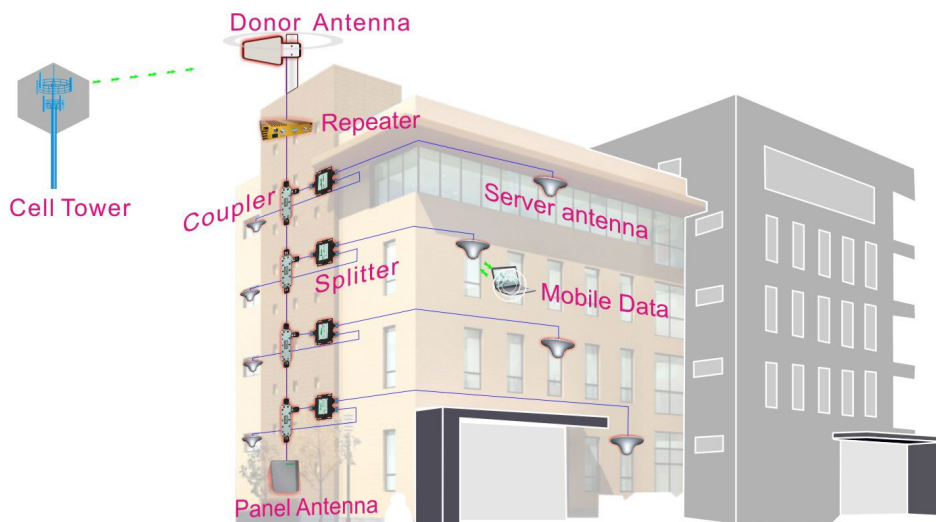
Features:

- Supports 800, 900, 1800 and 2600
- LCD display the input/output signal strength
- Auto isolation detection
- Auto gain control
- Auto level control
- MGC gain or level control
- Smart LCD to guide the installation

Product Photos:



Applications:



* MCC reserves the right to make the changes considered necessary in this document.

Specification:

Electrical Data			
Item		Uplink	Downlink
Frequency Range (MHz)	FDD 800 Band	832-862	791-821
	FDD 900 Band	880-915	925-960
	FDD1800 Band	1710-1785	1805-1880
	TDD 2600 Band	2575-2615	2575-2615
Bandwidth (MHz)	FDD 800 Band	0.2-30 MHz tunable	
	FDD 900 Band	0.2-30 MHz tunable	
	FDD1800 Band	0.2-30 MHz tunable	
	TDD 2600 Band	0.2-30 MHz tunable	
Number of sub-band	FDD 800 Band	1	
	FDD 900 Band	1	
	FDD1800 Band	1	
	TDD 2600 Band	1	
Max. Total Output Power(dBm)		15	20
Max. Gain (dB)		65	70
Automatic Gain Control		40dB	
MGC (Step Attenuation)		20dB@ 1dB/Step	
Noise Figure (dB)		≤8.0@EBW	
Input VSWR (Power up, Min Gain, Pin=-30dBm)		≤ 2.0	
Ripple In Band (dB)		≤6.0	
Out of Band Rejection (dBc) At +25°C	±1MHz offset	≤-10	
	±2MHz offset	≤-30	
	±5MHz offset	≤-45	
Time Delay (us)		≤ 3.0	
EVM	LTE	≤8.0%	
	NR	≤3.5%	
Frequency Stability(ppm)		≤±0.05	≤±0.05
Spurious Emission (dBm)	9 kHz -150 kHz/1kHz	≤-36dBm	
	150 kHz - 30 MHz/10kHz	≤-36dBm	
	30 MHz - 1 GHz/100kHz	≤-36dBm	

* MCC reserves the right to make the changes considered necessary in this document.

	1 GHz- 12.75 GHz/1MHz	≤-30dBm
Synchronization Mode		Baseband synchronization
Impedance		50 Ω
Power Consumption(W)		≤ 50
Power Supply		DC 24V/7A
Environmental Data		
Operating temperature range		-25°C to +55°C
Storage temperature range		-40°C to +85°C
Relative humidity		5% - 80%
Applications		IP43(indoor)
Monitoring and control	Local Control	USB (by OMT)
	Remote Control	LTE Modem (Option)
Mechanical Data		
Dimensions		234*280*52 (mm)
Weight		≤5Kg
Connectors type		N-Female
Mounting		Wall
Packing		1 Pie in box